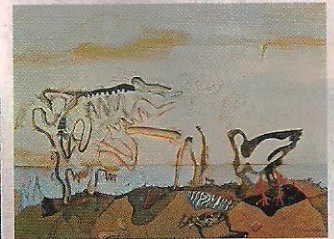
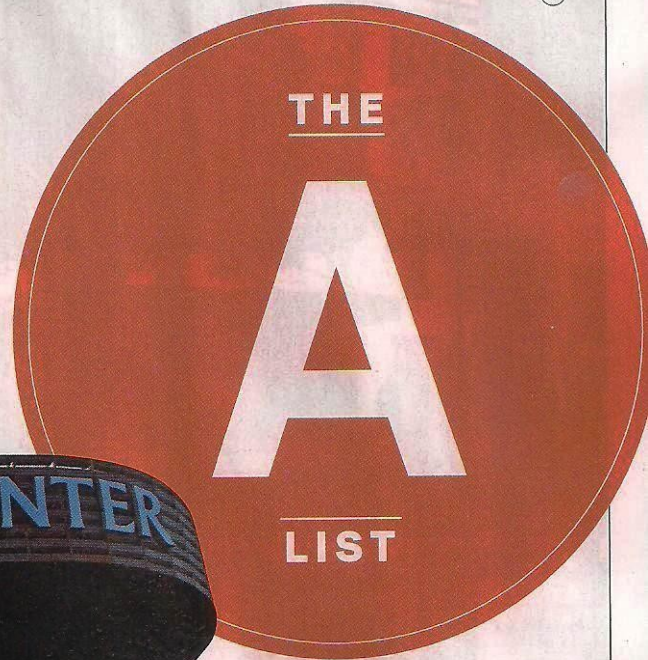
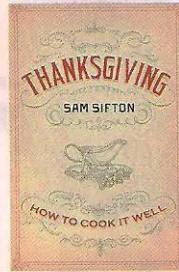
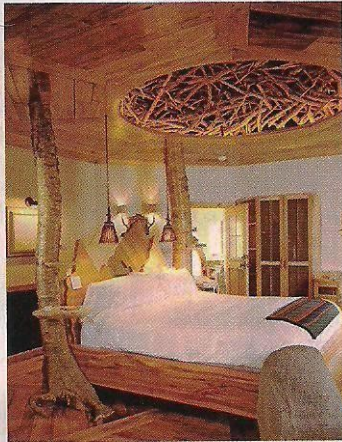
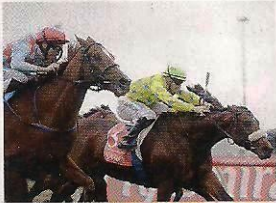


LIFE

IT'S ALL ABOUT

LISTS



➔ WHAT YOU SHOULD KNOW NOVEMBER 2012

1. Oscar Heyman's **LIGHTNING RIDGE** necklace
2. **MACH 2 MOTH**
3. **LAIRD'S TRAVELLER BAG** by Fraser Balgowan
4. Bentley's 2013 **MULSANNE**
5. **THANKSGIVING: HOW TO COOK IT WELL** by Sam Sifton
6. **BEAVER LODGE** at Winvian
7. **THE MELBOURNE CUP**
8. Transforma pocket watch by **PARMIGIANI FLEURIER** (for others, see page 94)
9. Nets vs. Knicks at the **BARCLAYS CENTER**
10. **SALVADOR DALÍ** at the Centre Pompidou

LIFE LIST

TRAVEL

Late Checkout

Five jaw-dropping hotel rooms.

BY ANN ABEL



The Chalet, Whare Kea Lodge, New Zealand

It's just you and the stars (and your host and adventure guide, off in the staff quarters) at this haute hikers/skiers hut 5,700 feet up in the Southern Alps. Reached by helicopter, the chalet looks out on spectacular 360-degree views. Book through Seasonz Travel. www.seasonz.co.nz



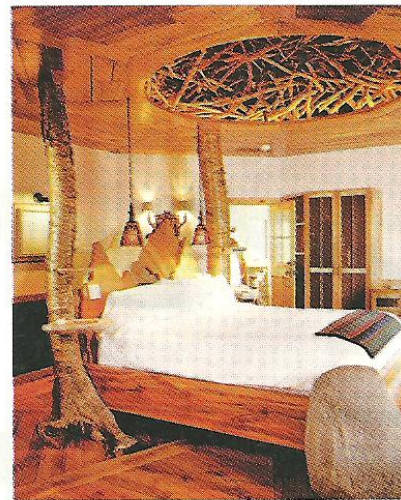
COMO Suite at Umabona, COMO Shambhala Estate, Begawan Giri, Bali

Its esthetic is drawn from the pleasure gardens of 14th-century Majapahit palaces—like the stone wall in the shower room, inspired by Kama Sutra reliefs at Borobudur in Java. www.cse.como.bz

Beaver Lodge Cottage, Winvian, Conn.

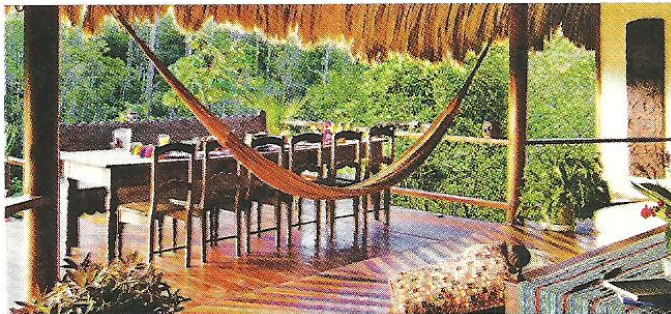
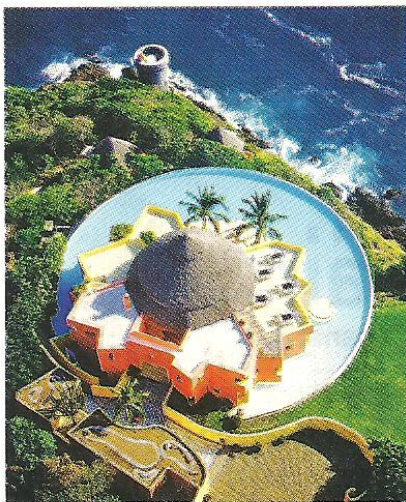
You could admire the intricate stone- and woodwork, warm up by the fireplace or bird-watch from the upstairs sitting room. But you're going to be gawking at the ceiling, where an actual beaver dam—pressure-washed sticks from dams around the property—has been assembled upside down over the bed.

www.winvian.com



Sol de Oriente, Costa Careyes, Mexico

This cliff-top palace comes with its own moat—a wraparound infinity pool. Under the palapa roof is a palatial open-air living room and a gracious dining area that hardly seems necessary, since the house staff keeps the sevice and margaritas coming wherever you happen to be. www.careyes.com



Francis Ford Coppola's Villa, Blancaneaux Lodge, Belize

Complete with butler service, the owner's compound at this rain forest retreat is decorated with a cinematographer's eye (and a well-placed hammock). Nature provided the waterfall view. www.coppolareorts.com