



WINVIAN

LITCHFIELD HILLS  
CONNECTICUT

# escape to the unexpected.

Tucked away in the Litchfield Hills, Winvian offers European hospitality, close to home. Set on 113 acres bordered by sprawling woods and picturesque lakes, Winvian transports visitors away from their day-to-day lives, immersing them in a luxury escape that exceeds all expectations.





# ELEGANT HOSPITALITY

IS OUR FAMILY TRADITION

Maggie Smith and Heather Smith Winkelman are a mother-daughter duo with a unified vision: making each Winvian guest feel as if they are being welcomed into the family fold.



They aren't a corporation, and it shows. Maggie and Heather have worked to create a strong bond between management and staff, one characterized by loyalty and affection and based in mutual respect.

Visitors to Winvian can feel that difference, from the warm welcome they receive upon arrival, to the individualized care evident in the staff's attention to detail. Repeat visitors to Winvian will feel like family, greeted by name, with their preferences remembered from past stays. New visitors will fall in love with Winvian's unique blend of elegance and warmth.

While honoring Winvian's history, Maggie and Heather value flexibility, adapting to the changing needs of their guests. Whether they are longtime loyalists back for their annual visit, couples seeking a romantic retreat, adventurers interested in staying in each of the cottages, or families choosing to enjoy Winvian together, Maggie and Heather provide elegant hospitality catering to individual desires.



WINTHROP SMITH &  
HIS WIFE VIVIAN



Helicopter



”  
an unforgettably  
unique experience

## DESIGNED TO DELIGHT

Winvian's accommodations reject corporate uniformity in favor of custom-tailored luxury. Eighteen cottages and one welcoming suite in the historic family home reflect the imagination of fifteen individual architects, each promising guests an unforgettably unique experience.

Each accommodation invites guests to enjoy a one-of-a-kind escape. Whether you choose to stay in a tree house, log cabin, secret hideaway, golfer's paradise, or a cottage that features a historic helicopter, Winvian delights both the inner child and their adult counterpart seeking high-end amenities and a comfortable bed.

Many cottages showcase work by local artists, and surprising architectural features that set them apart from typical luxury resorts. Every cottage features at least one fireplace as well as a private outdoor space to sit back with your drink of choice, and savor the season.

*Greenhouse*





## TREEHOUSE

A two-story fantasy suspended in the trees, Treehouse elevates romance to new levels. Relax in a steam shower, or enjoy your morning coffee with a treetop view from a private balcony.



## CAMPING

If glamping is more your style, Camping features every amenity, all framed by floor to ceiling windows showcasing a seasonal view of wildflowers and fiddleheads, colorful leaves, or falling snow.



## ARTIST

A true original, Artist's play of light and textures—warm brick, colorful stained glass, curved arches and angular beams—invites guests to experience the beauty of relaxation. Pick up a paintbrush (or a wineglass) and enjoy the attached artist's studio.



## LOG CABIN

An elegant retreat perched on the edge of the White Memorial Nature Preserve, Log Cabin pairs custom with cozy, from its high ceiling featuring a stunning chandelier, to the radiant heating in the pebbled bathroom floor.

# a windowed wonderland



Natural light floods the welcoming interior of Greenhouse by day, while flickering firelight cues romance and relaxation by night. Its glass-walled Great Room opens onto a large patio that suggests intimate conversation or the company of a good book.



## CAN YOU KEEP A SECRET?

Moody and romantic, Secret Society invites whispered intimacies, and private pleasures. Within its dark exterior lies an exclusive retreat, with decor suggesting an elegant Ivy League club, and a windowed ceiling supplying ample light for reconnecting with your favorite co-conspirator.



# a harmonious escape tucked into the New England woods



Playful colors and modern design make beautiful Music together in this airy cottage inspired by what Shakespeare dubbed “the food of love.” A double-sided gas fireplace and a spa-like bathroom strike the right note for romance and relaxation.

A LODGING LIKE NO OTHER



Exterior of Beaver Lodge

Beaver Lodge immerses guests in nature. Look out on Beaver Pond, or gaze up at an actual beaver lodge that forms a one-of-a-kind canopy over a bed with posts crafted from stones and gently curving tree trunks. Magic permeates every detail of this lofted two story lodge.





# A NEW ENGLAND CLASSIC



Stable elevates farmhouse chic to new levels—three to be exact. Each story features a room with a view, from the spacious living room, with its soaring beamed ceiling, to the mid-level master looking out on the forest, to the luxurious bathroom with a sunken tub that comprises the lower level.



Industry



Library



Stone



Connecticut Yankee



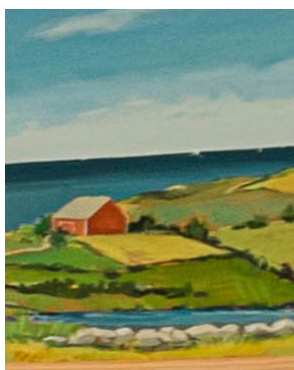
From stacked stone and curving roofs, to indoor trees that draw the beauty of the surrounding landscape indoors, each cottage at Winvian surprises visitors with an artful juxtaposition of high-end finishes and natural materials.

*There's no hiding the charm of Charter Oak*

”  
A curated  
escape from the  
expected



COTTAGES



## COASTAL CONNECTICUT IN THE LITCHFIELD HILLS

Evoking a lighthouse, Maritime brings the spirit of Coastal Connecticut to the Litchfield Hills. From intricate woodwork and colors drawn from sea and sky, to a dazzling mural in the vaulted ceiling, this romantic cottage captivates guests.





HELICOPTER





cultivate,  
curate,  
elevate.



DINING



FROM  
OUR  
GARDENS



TO  
YOUR  
TABLE





DINING AT WINVIAN

To me, fine dining is about how much love, passion, and research you can bring to a meal.

— Chef Chris Eddy

Chef Chris Eddy approaches his craft with the core values of “integrity and culinary artistry,” promising “solidness is our signature.” One taste and you understand that you are in the hands of a master, so skilled at his seed-to-table approach that creativity and flexibility to meet the needs of individual guests are second nature. The end result: a dining experience that feels fine without being fussy. The menu changes daily, remaining rooted in place and moment and connected to the surrounding land and larger community.

# The perfect pairing, every time



WHATEVER  
YOUR MOOD,  
YOUR TABLE IS  
WAITING.



*Seth Bird Patio*

Whether you prefer completely private in-room dining, a seat at the bar in Maggie's Tavern, a table for two in one of our welcoming breakfast rooms, an aperitif and a snack on the patio overlooking a sweeping view of the grounds, or a coveted spot in the main dining room distinguished by wood-beamed ceilings and art worthy of a world-class gallery, we have the ideal place for you to sit back and enjoy a memorably delicious meal.



*Green Room*

For dining reservations, please call  
860.393.3004



DINING



eat drink  
& escape  
with   
the seasons





A SETTING FOR EVERY  
OCCASION

# Maggie's Tavern



Sophisticatedly down to earth, Maggie's Tavern offers delicious food and drink in a cozy atmosphere that feels upscale but not uptight. The perfect place for an intimate lunch, or a pre-dinner cocktail, the welcoming feel of Maggie's Tavern inspires lingering long after your last dish has been cleared.

For reservations, please call 860.393.3004

DINING





# FROM RESERVATION TO RELAXATION:

INDULGE IN OUR AWARD WINNING SPA

Elevate your Winvian Experience with an hour or an afternoon of customized care. With our best-in-the-business therapists, and our exclusive selection of specialty products and procedures, we've earned a place on Conde Nast's list of the world's best wellness retreats. Advance booking required to ensure availability.

860.393.3021



WEDDINGS & CELEBRATIONS

# FROM THIS DAY FORWARD

At Winvian we celebrate the fact that no two couples are the same. Let our in-residence wedding expert and dedicated events staff customize a one-of-a-kind wedding that's as unique as your love



# WINVIAN

## GO AHEAD. MIX BUSINESS WITH PLEASURE.

### CORPORATE RETREATS

Winvian provides the perfect setting to reconnect, recharge, and reward your team. Our private estate redefines retreat, blending high tech and high end in a setting like no other. Contact us to learn how we can meet your needs.



# WINVIAN



# CHOOSE YOUR OWN ADVENTURE

Winvian offers a wealth of activities to enhance your stay. Venture off-site for everything from horseback riding, to hiking on the neighboring White Memorial Conservation Center trails. Or stay on property for a seasonal wine tasting, followed by a painting lesson with one of our local artists. See our website for a complete list of options. Please contact us in advance and let our expert Winvian staff assist in crafting your ideal itinerary.





Curated luxury.  
Timeless elegance.  
Experience Winvian.



LITCHFIELD HILLS  
CONNECTICUT

WINVIAN.COM | 860.567.9600

155 ALAIN WHITE ROAD, MORRIS CONNECTICUT 06763



RELAIS &  
CHATEAUX